

Murine Typhus

Lorrin Pang, MD, MPH
Maui District Health Officer

Facts about Typhus

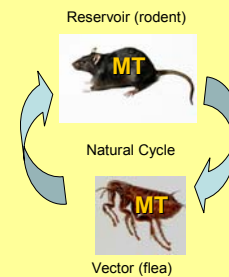
- “Murine” = rat, mouse, or related rodents
- Typhus ≠ Typhoid (*Salmonella typhi*)
- There are 3 kinds of typhus:
 - Murine Typhus
 - Scrub Typhus (transmitted by mites)
 - Epidemic or Louse Typhus (transmitted by lice)
- Murine Typhus is much less deadly

What causes typhus?

- Infectious Agent: Bacteria, *Rickettsia typhi*
- Reservoir: Rats, mice and other small animals including domestic pets.
- Vector: Flea



Life Cycle of Murine Typhus (MT)



How is it transmitted?

- Infective rat flea defecate *Rickettsia typhi* while sucking blood. Feces enter bite site or other skin wounds.
- Occasionally, infective flea feces can be inhaled.

